

# Barnsbury Retirement Living | Apartment 24

Open for Inspection  
24 June at 11am

## Approximate measurements

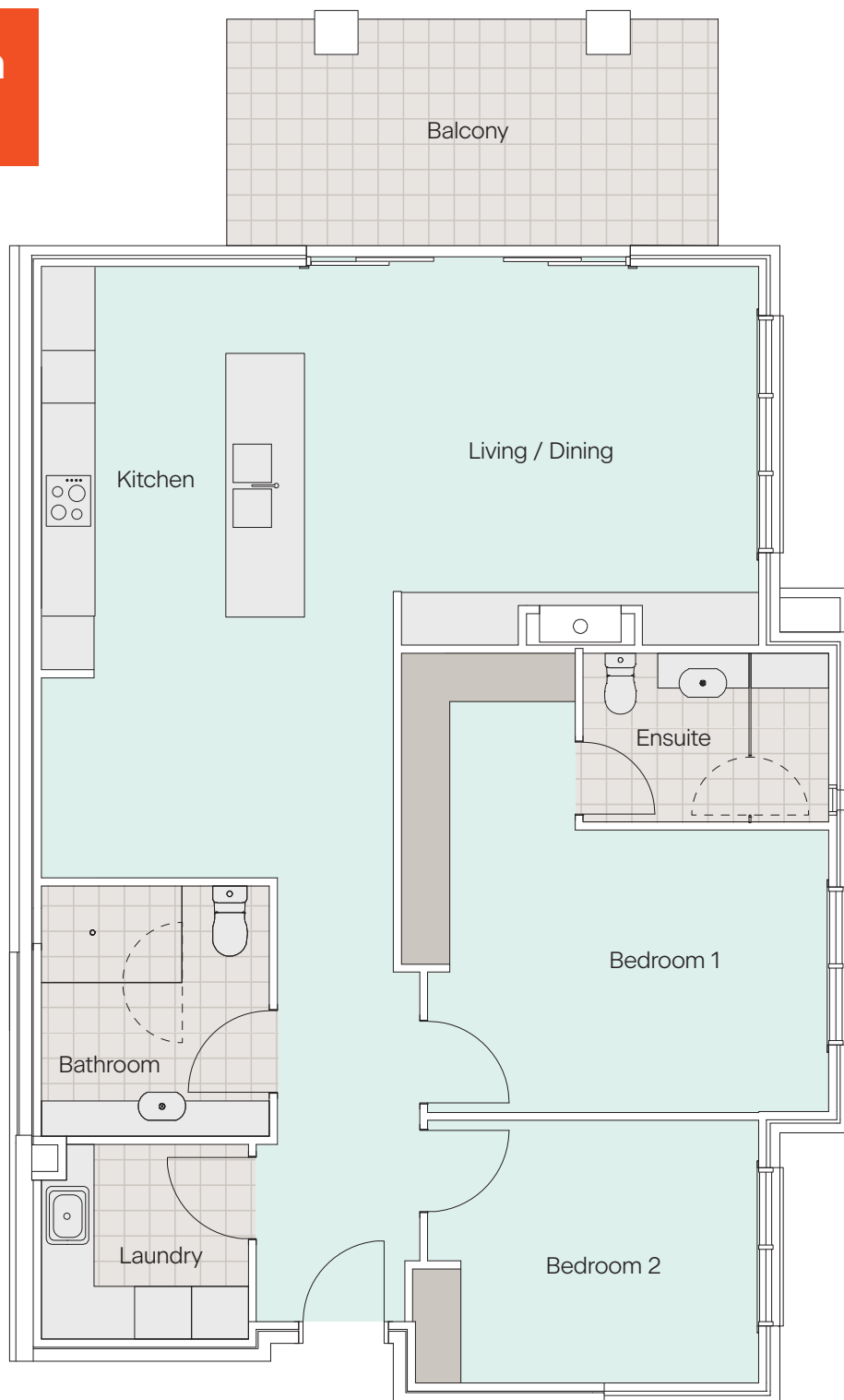
Total area  
114 sqm

Bedroom 1  
3.2m x 4.3m

Bedroom 2  
2.95m x 3.35m


Living, meals  
and kitchen  
3.7m x 5.1m

Balcony  
2.5m x 5.5m



The information provided is for illustrative purposes only and may not match the advertised property. Measurements are approximate and indicative only. The floor plan may be mirrored. Furniture is not included. VMCH reserves the right to vary the plans and measurements at any time.

Please contact us to find out more.

 1300 698 624 | [vmch.com.au/barnsbury](https://vmch.com.au/barnsbury)  
27 Barnsbury Road, Deepdene VIC 3103



**VMCH**