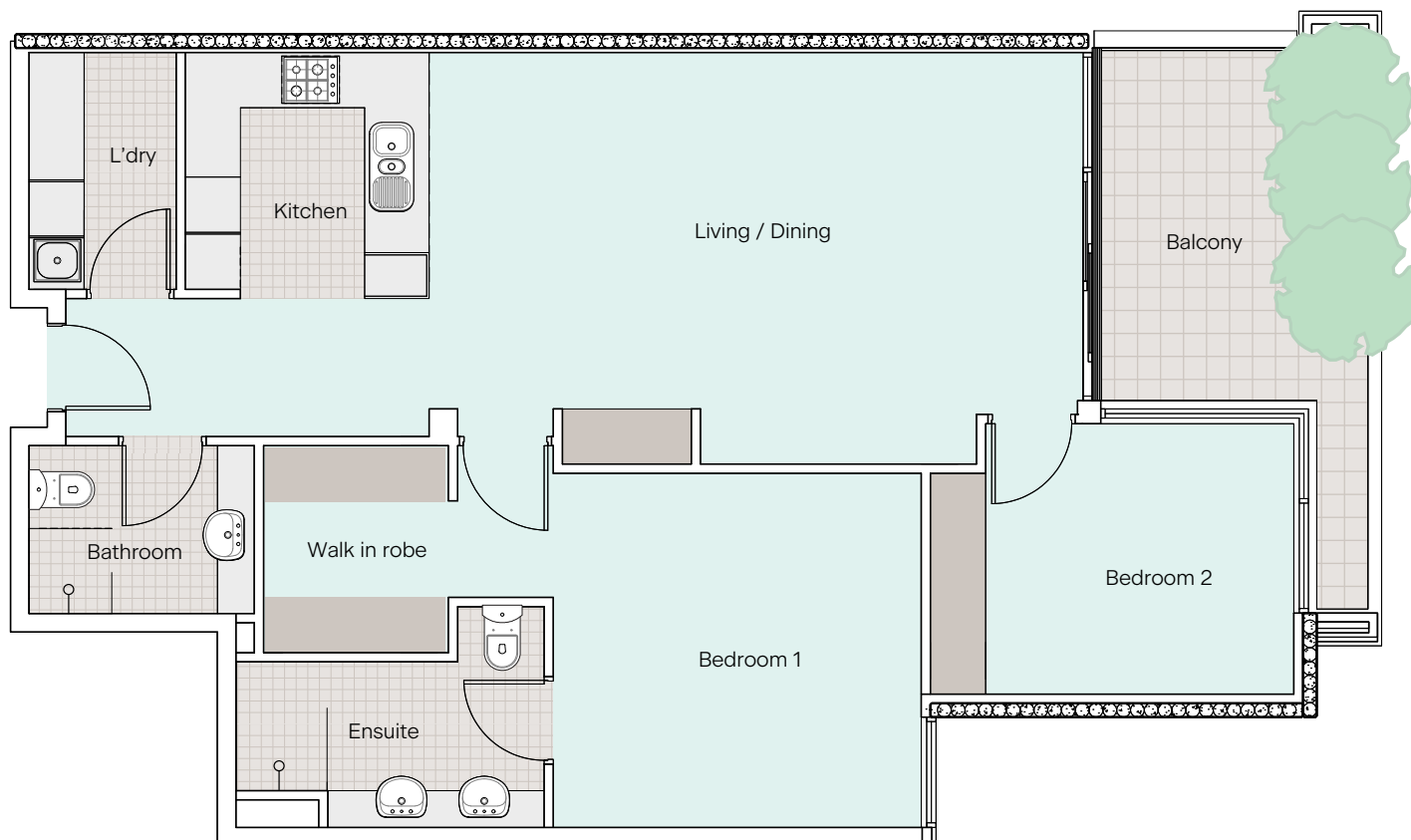


St. Joseph's Mews Premium Apartments



Approximate measurements

Internal area
102 sqm

Bedroom 1
3.8m x 4.0m

Bedroom 2
3.9m x 2.9m

Laundry
1.6m x 2.5m

Living / Dining
7.0m x 4.4m

Kitchen
2.6m x 2.5m

Balcony
3.3m x 2.7m

Disclaimer: There may be slight variations from the artist's impression shown. Furniture is not included.
VMCH reserves the right to vary the plans and measurements at any time. We will provide any updated plans to interested purchasers.

Please contact us for a private inspection.



1300 698 624
vmch.com.au/sjm
108 Denham Street Hawthorn VIC 3122



VMCH