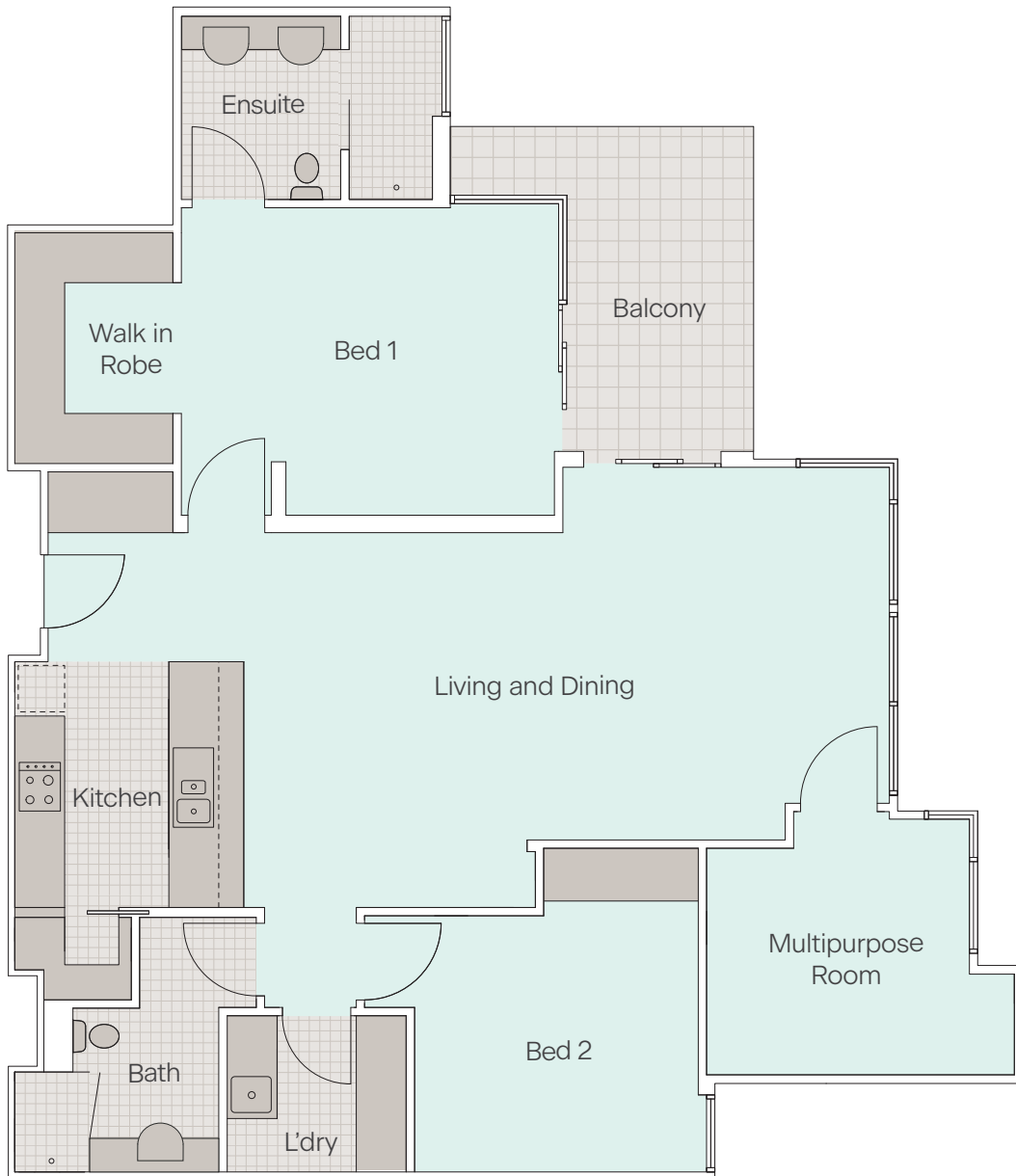


# St. Joseph's Mews | Apartment 310



## Approximate measurements

Internal area  
124 sqm

**Bedroom 1**  
4.4 m x 3.1 m

**Bedroom 2**  
3.0 m x 3.1 m


**Multipurpose Room**  
3.1 m x 3.0 m

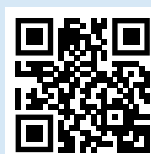
**Living/Dining**  
7.7 m x 4.5 m

**Balcony**  
2.3 m x 4.0 m

The information provided is for illustrative purposes only and may not match the advertised property. Measurements are approximate and indicative only. The floor plan may be mirrored. Furniture is not included. VMCH reserves the right to vary the plans and measurements at any time.

Please contact us for a private inspection.

 1300 698 624 | [vmch.com.au/sjm](http://vmch.com.au/sjm)  
108 Denham Street, Hawthorn VIC 3122



**VMCH**