

Athelstan Premium Apartments



2  2  1 

Apartment 6 Available now!

\$1,130,000 - \$1,170,000

This east-facing ground floor apartment features two master suites and offers the perfect opportunity to enjoy morning sun with views of the beautifully manicured gardens on Athelstan Road.

Spanning 104sqm (approx.) internally, with an additional 13sqm terrace (approx.), this apartment offers both space and comfort.

A study nook is conveniently positioned off the main living area, seamlessly extending the open-plan living and dining space.

The modern kitchen is complemented by a separate laundry room at the rear for added practicality.

For peace of mind, an underground car space with lock-up storage provides security and convenience.

At Athelstan, you can delve into a new book in the library, connect with friends in one of the luxurious, light-filled lounges or attend one of the special interest groups.

Located in leafy Camberwell, Athelstan represents the very best that Melbourne living can offer.



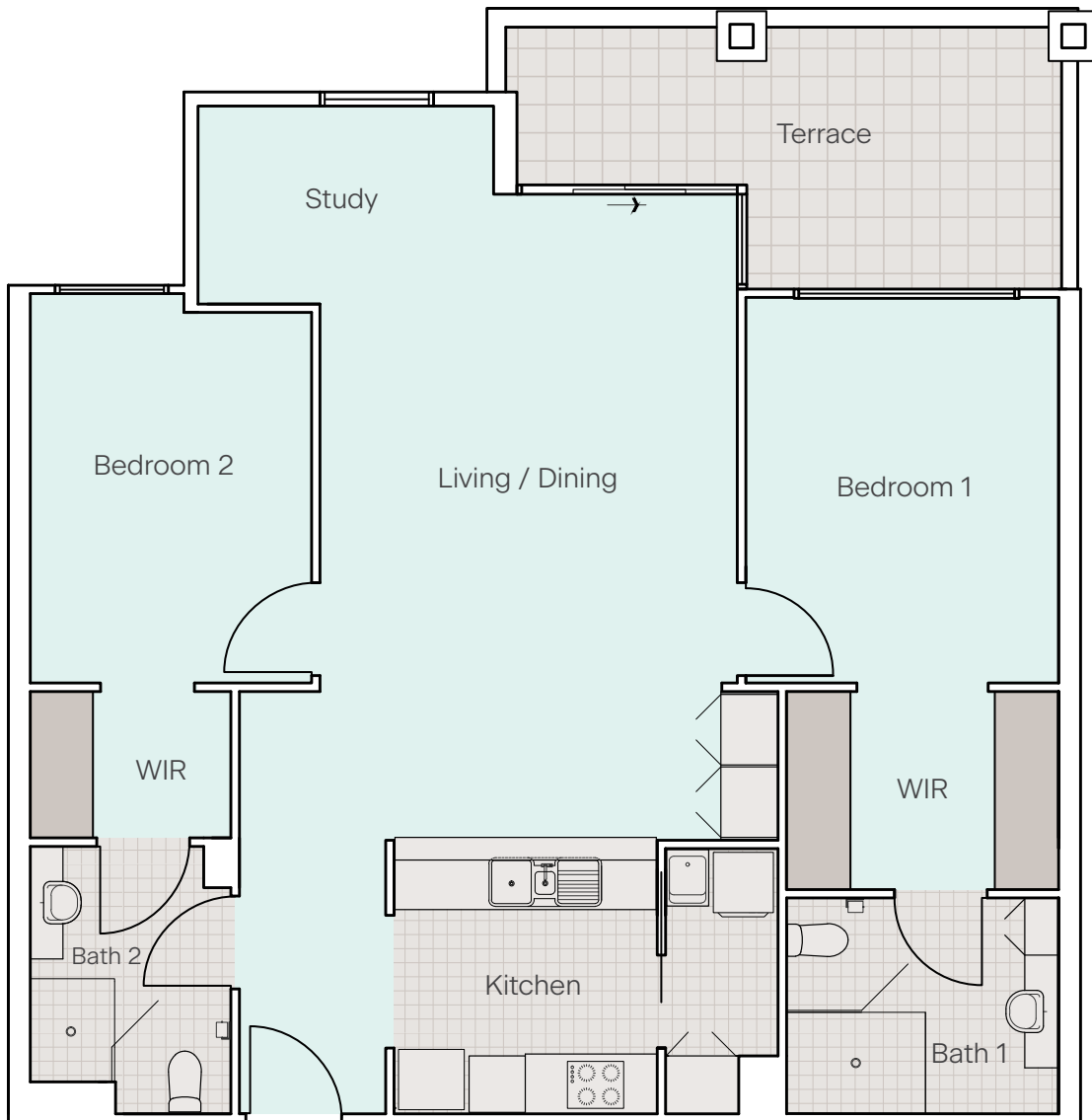
Please call Colin for more information.

 (03) 9809 1231 | vmch.com.au/athelstan
450 Camberwell Road, Camberwell VIC 3124



VMCH

Athelstan | Apartment 6



Approximate measurements

Internal area
104 sqm

Bedroom 1
4.1m x 3.3m

Bedroom 2
3.9m x 2.9m

Living/Dining
6.8m x 4.4m


Kitchen
2.9m x 2.7m

Terrace
13.5 sqm

Disclaimer: There may be slight variations from the artist's impression shown. Furniture is not included. VMCH do not warrant that the size of the property is correct. We will provide any updated plans to interested purchasers if the plan or estimated size of the property is found to be incorrect.



Please call Colin for more information.

 (03) 9809 1231 | vmch.com.au/athelstan
450 Camberwell Road, Camberwell VIC 3124



VMCH