

# Athelstan Premium Apartments



2  2  2 

## Apartment 48 Available now!

**\$1,460,000 - \$1,500,000**

This sought-after, spacious north-west facing unit is located on the second floor. Offering 112sqm (approx.) of internal space, and a 5 sqm (approx.) corner terrace.

The open plan living and dining area experiences abundant light throughout the day. Storage is abundant, with a dedicated laundry room at the end of the thoughtfully designed kitchen, cupboards in the entry hallway, and built-in storage in the second bedroom. The master bedroom suite includes a walk in robe and private ensuite.

At Athelstan, you can delve into a new book in the library, connect with friends in one of the luxurious, light-filled lounges or attend one of the special interest groups.

Located in leafy Camberwell, Athelstan represents the very best that Melbourne living can offer.



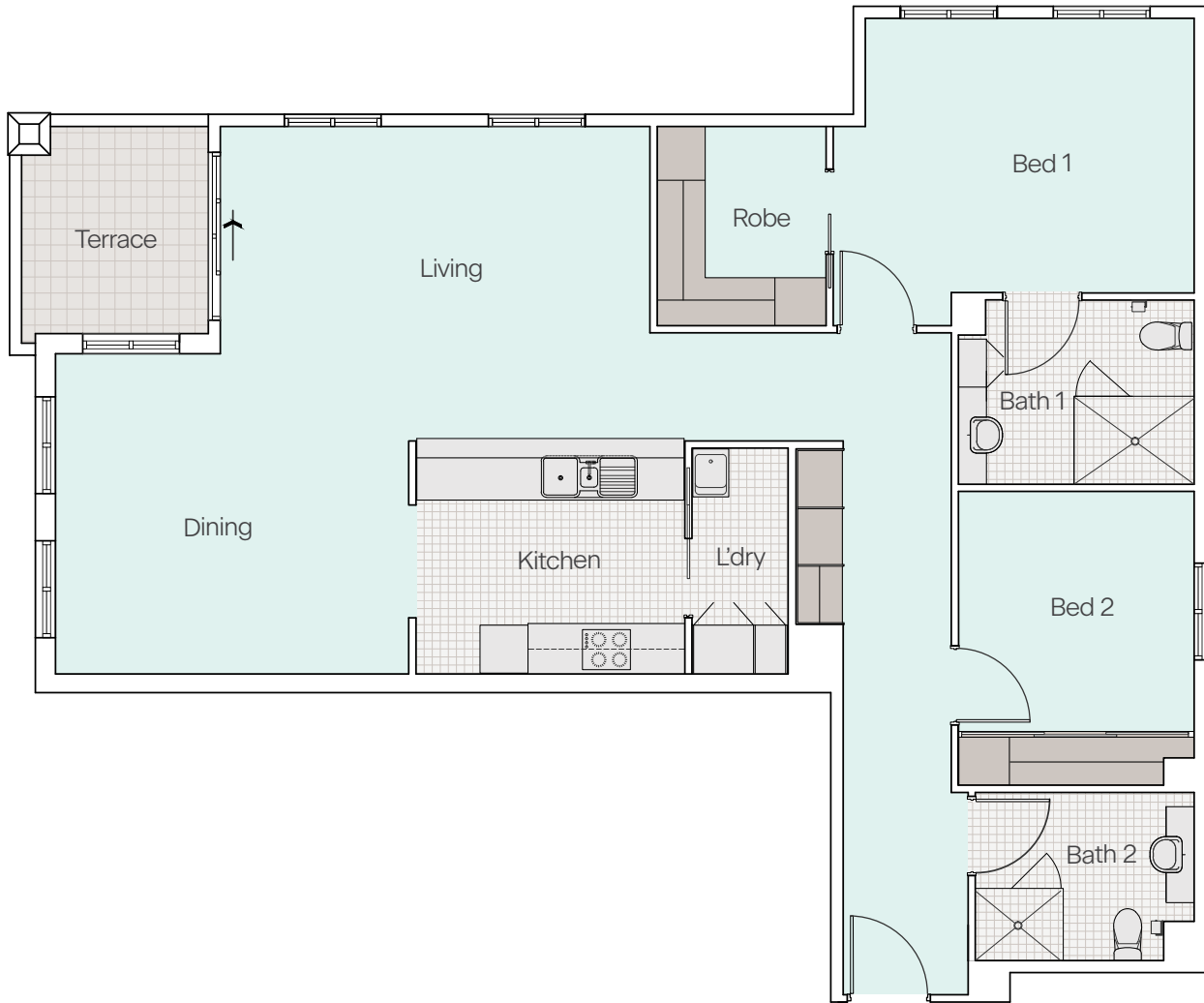
Please call Colin for a private inspection.

 (03) 9809 1231 | [vmch.com.au/athelstan](http://vmch.com.au/athelstan)  
450 Camberwell Road, Camberwell VIC 3124



**VMCH**

# Athelstan | Apartment 48



## Approximate measurements

Internal area  
112 sqm

**Bedroom 1**  
4.1m x 3.4m

**Bedroom 2**  
2.9m x 3.0m

**Living**  
5.3m x 3.9m

**Dining**  
4.4m x 4.0m


**Kitchen**  
2.9m x 3.3m

**Balcony**  
5 sqm

Disclaimer: There may be slight variations from the artist's impression shown. Furniture is not included. VMCH do not warrant that the size of the property is correct. We will provide any updated plans to interested purchasers if the plan or estimated size of the property is found to be incorrect.



Please call Colin for a private inspection.

 (03) 9809 1231 | [vmch.com.au/athelstan](http://vmch.com.au/athelstan)  
450 Camberwell Road, Camberwell VIC 3124



**VMCH**