

Corpus Christi | 5 Harmony Court

Approximate measurements

Internal area
94 sqm

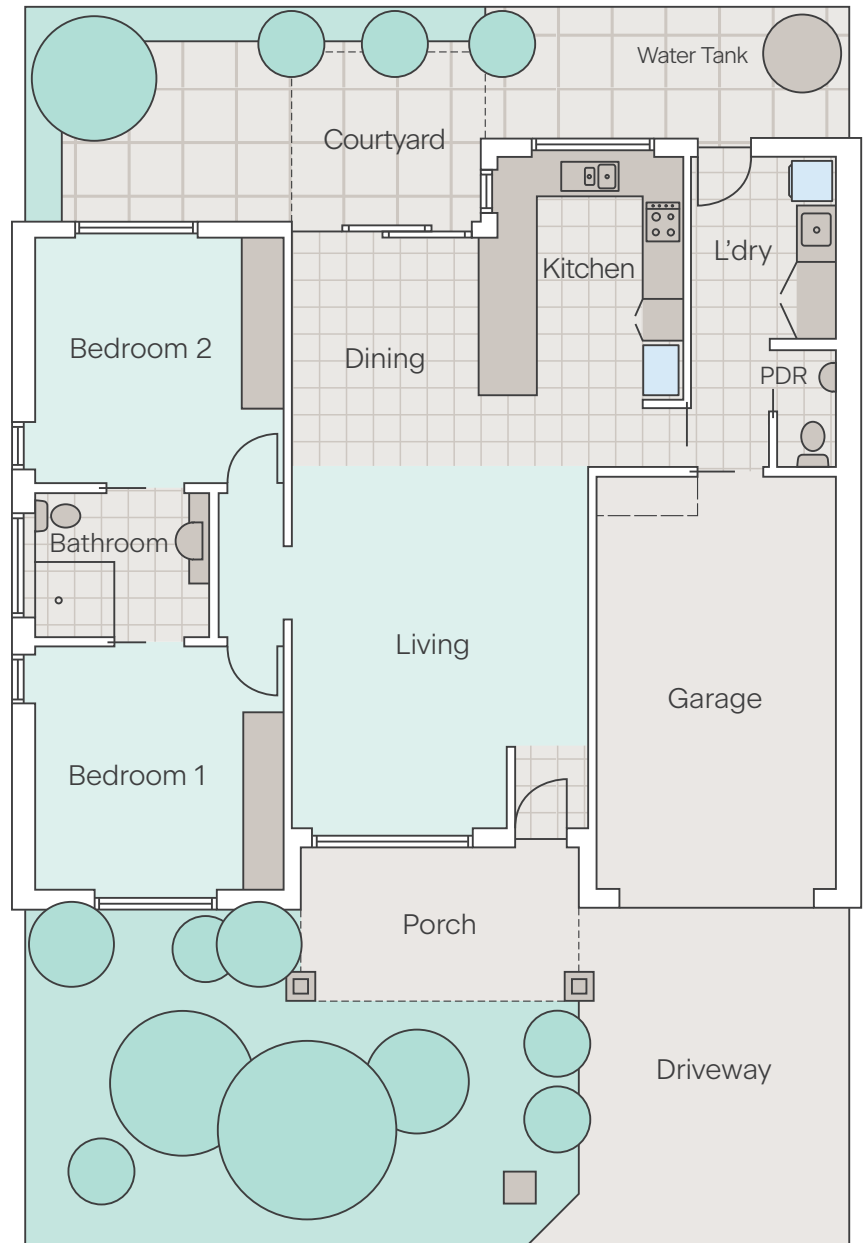
Bedroom 1
3.6m x 3.7m

Bedroom 2
3.5m x 3.7m

Living room
4.3m x 5.3m

Kitchen
4.3m x 5.3m

Garage
3.5m x 6.1m



Disclaimer: The information provided is for illustrative purposes only and may not match the advertised property. Measurements are approximate and indicative only. The floor plan may be mirrored. Furniture is not included. VMCH reserves the right to vary the plans and measurements at any time.



Please call Trish for a private inspection.

 (03) 8581 0600 | vmch.com.au/cc
Music Drive, Clayton VIC 3168



VMCH