

# Croydon

## Supported Independent Living (SIL)

We are looking for two people to share our beautiful new home in Croydon. This stunning architecturally designed three-bedroom home is in a prized location near central Croydon.

The open plan kitchen and dining area leads out to a lovely, leafy outdoor entertainment area. There's also a large living room with a theatre room, three bedrooms with built in robes, beautifully appointed, accessible bathrooms, ducted heating, split-system cooling, large laundry, freshly painted interiors, security alarm, solar panel system and a double automatic garage.

This home also features wheelchair access throughout the home with an internal lifting hoist in the third bedroom that tracks to the bath and shower and two living spaces. The home is situated near all Croydon amenities including, Croydon Central shops, Croydon train station and local buses, Croydon Park, recreation centres, Croydon cinema and library, cafes, pubs and restaurants.



# About our home

## Features

- Three bedrooms
- Two bathrooms, one ensuite
- Bright large open-plan living spaces
- Large fully equipped kitchen
- Outdoor living with entertainment area
- Staff bedroom and bathroom
- Laundry.

## Design category

The SIL design category is Improved Liveability.

## Building Category

This large dwelling is designed to be a Group Home.

## Accessibility

All entrances and exits are without steps, with an open floor plan inside. It is situated on a flat block of land with no steps. The house is suitable for people who are ambulant and have low support needs. Outdoor areas are paved for easy access to the garden and entertaining areas.

## About the vacant room

The vacant rooms have built in robes and features cooling and heating for resident comfort in the winter and summer months.

The new housemate can furnish their rooms with their belongings to suit their personal style.

## VMCH supports

We offer support seven days a week, including a sleepover support model. VMCH is the support provider. The staff are skilled in supporting with people with dual disabilities.

## Who lives here?

We welcome enquiries from people who like to socialise and spend time with their housemates. We have one person ready to move in September 2023.

## Things you need to know

You must be 18 years or over to apply. As we are a registered NDIS Accommodation provider, you will need to have the appropriate Supported Independent Living (SIL) funding in the your NDIS plan. You will need to be able to pay rent and utilities and establish a Residential Agreement.

## Date of vacancy

The rooms are available from September 2023

## How to apply or find out more

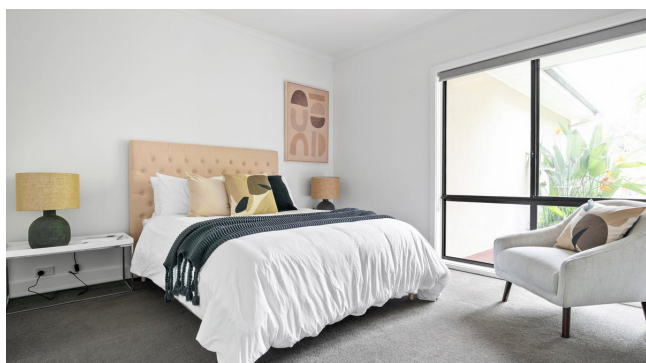
Please contact us via email [hello@vmch.com.au](mailto:hello@vmch.com.au) or call **1300 698 624** during business hours to find out more or book a tour.

[www.vmch.com.au](http://www.vmch.com.au)

---

## VMCH is a registered NDIS provider

The information contained in this flyer is correct at April 2023. Please note, the applicant must have the financial means to pay the rent and utilities and sign (or their representative) a residential agreement.



1300 698 624 | [hello@vmch.com.au](mailto:hello@vmch.com.au)  
[vmch.com.au](http://vmch.com.au)



**VMCH**